



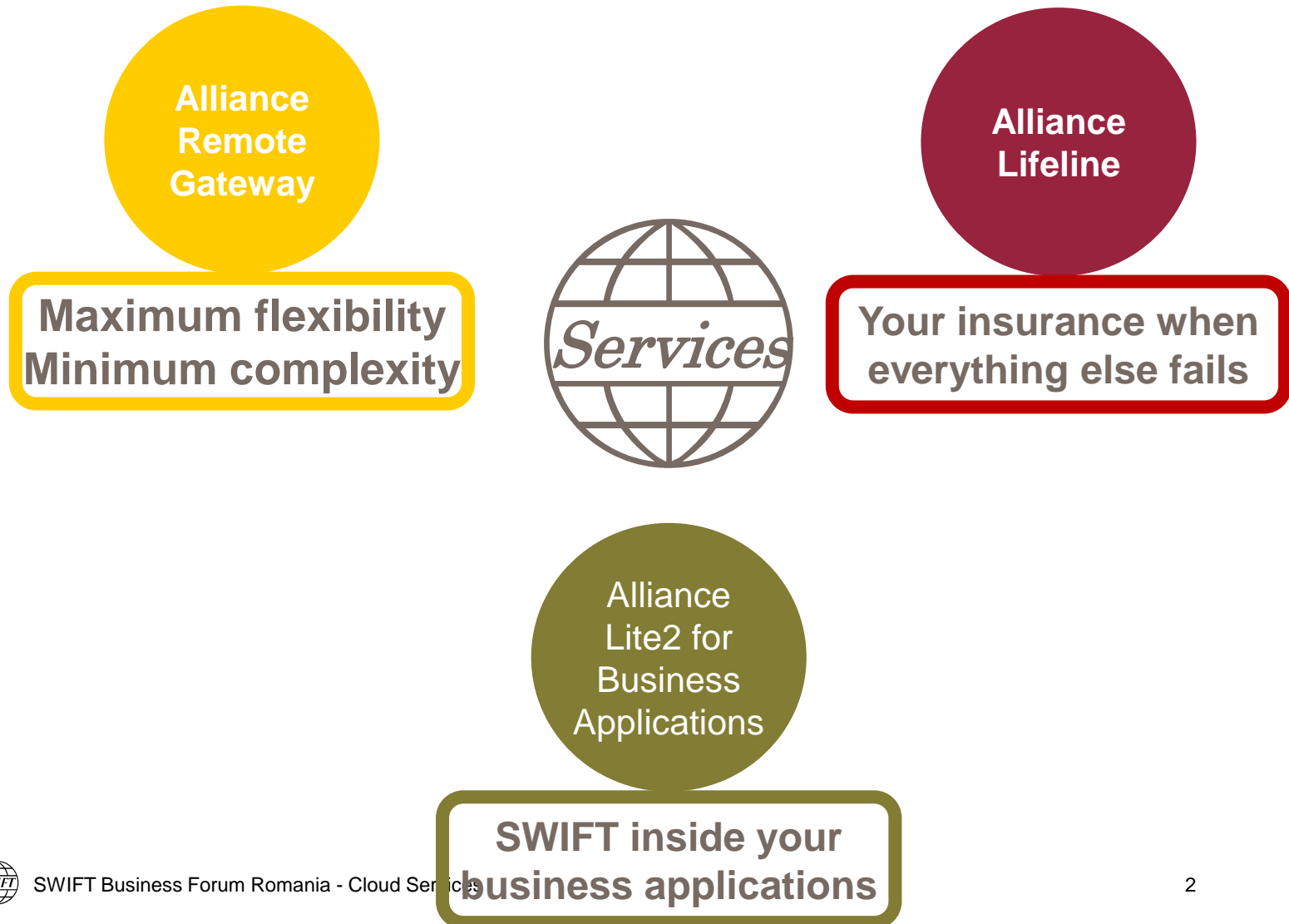
Cloud Services

Jeroen Aerts, Product Manager, SWIFT

SWIFT Business Forum Romania

30 October 2014

Cloud Services Overview





A typical SWIFT infrastructure

Many SWIFT-specific components to maintain



More technical, more SWIFT specific

ARG eliminates many technical components

You keep full control over your messaging setup



Highly secure

Designed and
operated by SWIFT

Cost-effective

Save money by
letting SWIFT host
technical
components

Peace of Mind

Runs inside our
secure OPCs

Best in class
reliability and
support





This is a real SWIFT infrastructure!

Resilience comes at a high cost



Alliance Lifeline gives you additional resilience

At a fraction of the cost



Alliance
Lifeline



Comprehensive service packages

Enjoy peace of mind with our fully managed service

Set-up Services

Analysis
& Design

Implementation

Activation
Testing

End-to-end Project Manager

Operation & Maintenance

Activation /
Deactivation

Testing

Change
Management

Customer Support

- Requirements assessment and solution design
- Customisation to your specific needs
- Remote installation
- Initial RMA records import
- Activation testing
- Activation tutorial
- End-to-end project management

- Activation/deactivation on request
- Message reconciliation assistance
- Activation testing (twice per year)
- Additional configuration changes*

* Additional charges will apply



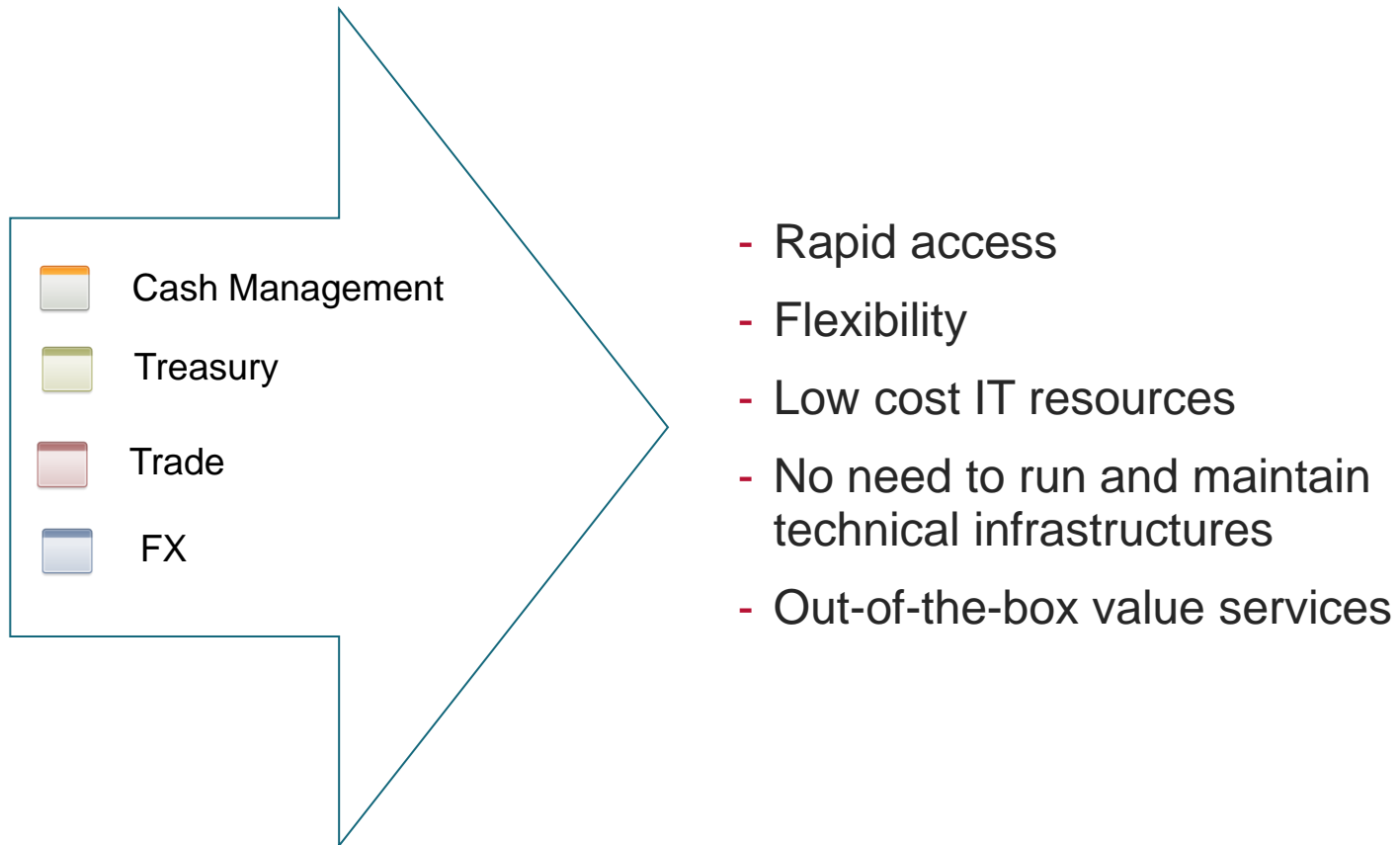


Lite2 for Business Applications



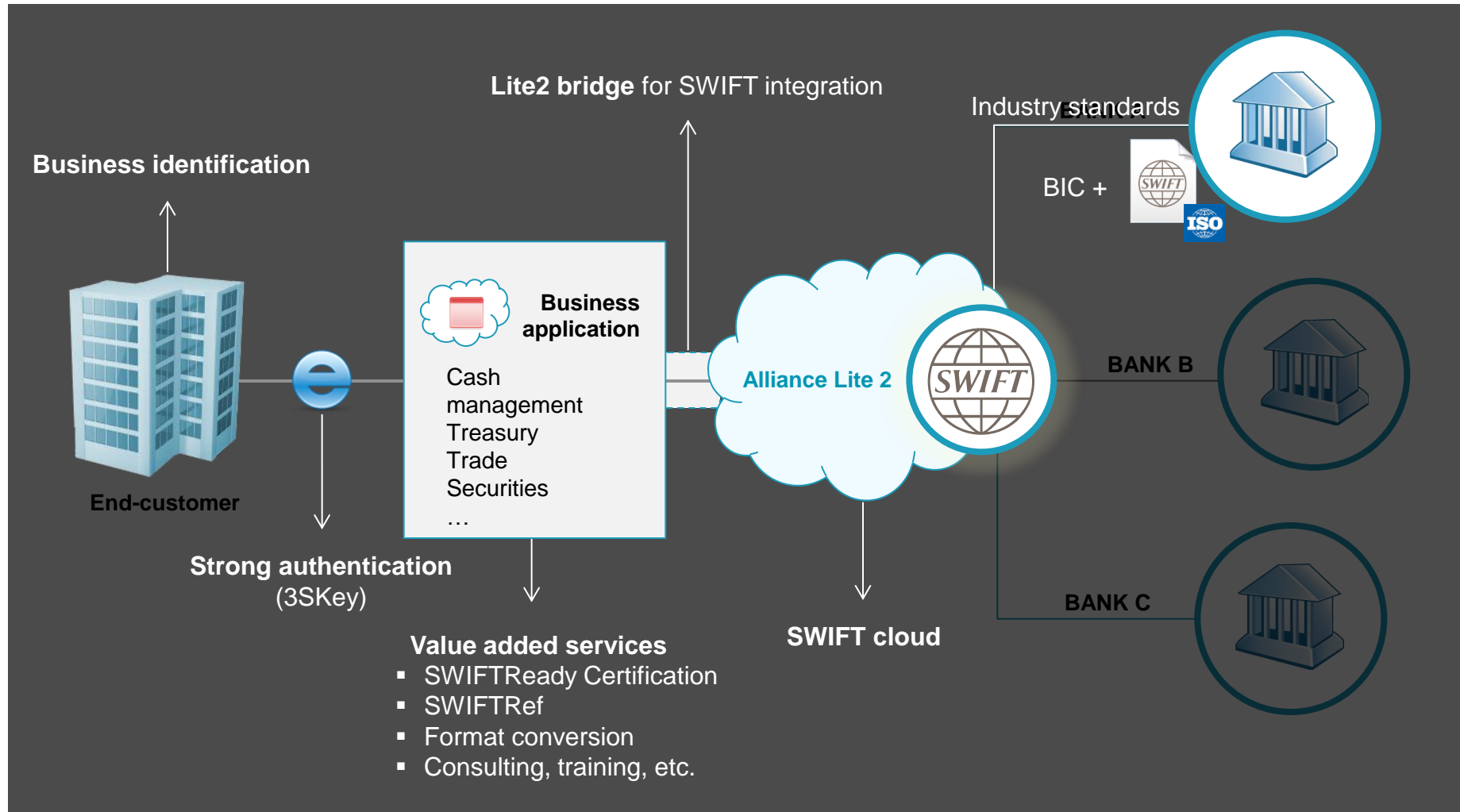
Shift to cloud application services

End-users don't want to expend, run or maintain on-premise business applications



Extended value for business applications

Connecting your application to the SWIFT Network using Lite2



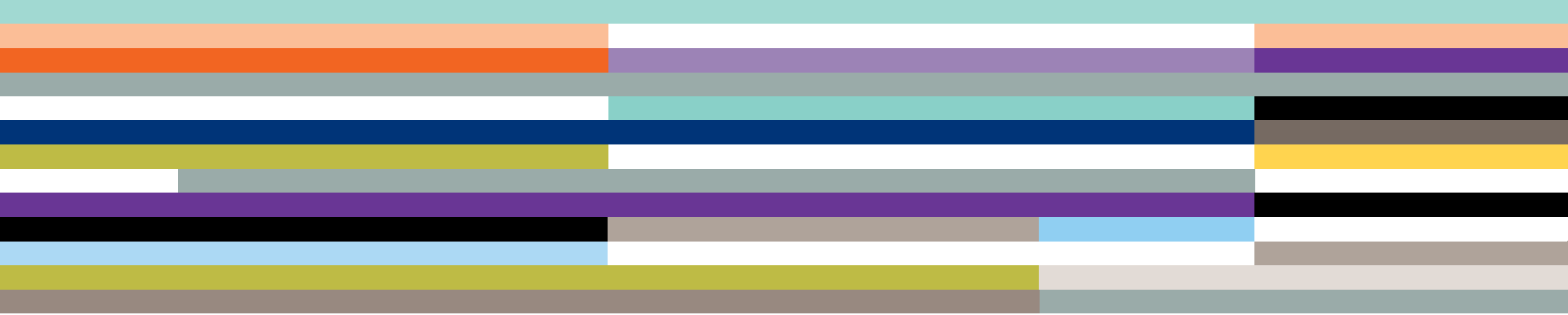
Application providers integrating Lite2

A standardised entry point for Corporate communications



Questions?





Backup slides



Alliance Remote Gateway – Highlights

Alliance Gateway hosted by SWIFT

Peace of mind through SWIFT's highly secure and reliable operations and support

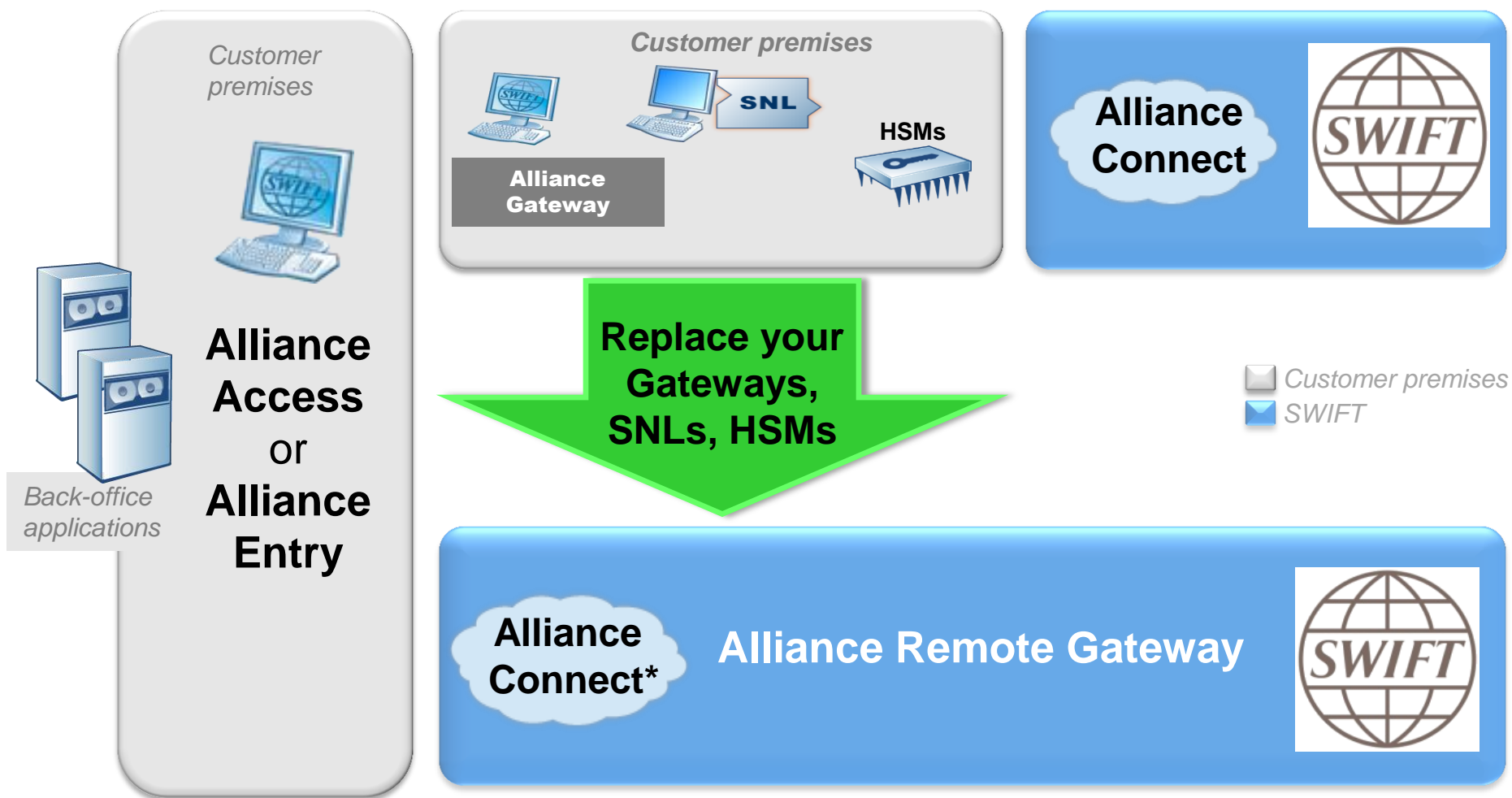
Less complexity, effort, and infrastructure for you

All SWIFT messages, all SWIFT flows including FIN, InterAct, FileAct and Browse

No change to features, screens and integration capabilities of Access or Entry



What is Alliance Remote Gateway?



* All Alliance Connect versions are supported (Bronze / Silver / Silver+ / Gold), optional internet



Alliance Remote Gateway – Light footprint

1



Alliance Access or Entry on Windows, Linux, AIX and Oracle Solaris

2



SWIFT VPN boxes (Alliance Connect)

- *All options supported (Bronze/Silver/Silver+/Gold) allowing to connect using leased lines and/or internet*
- *Secure & reliable, with resiliency built-in*

3



SWIFT security tokens (USB)

** support for software certificates coming soon*

Simplify your systems:

- **No** need to run Alliance Gateway, SWIFTNet Link or HSMs at your premises
- **No** need for additional software
(Alliance Access and Entry have built-in support for Alliance Remote Gateway)


Alliance Lifeline – Highlights



Always ready, activated on demand



All SWIFT message types and standards



Peace of mind with SWIFT's world-class security, reliability, service and support



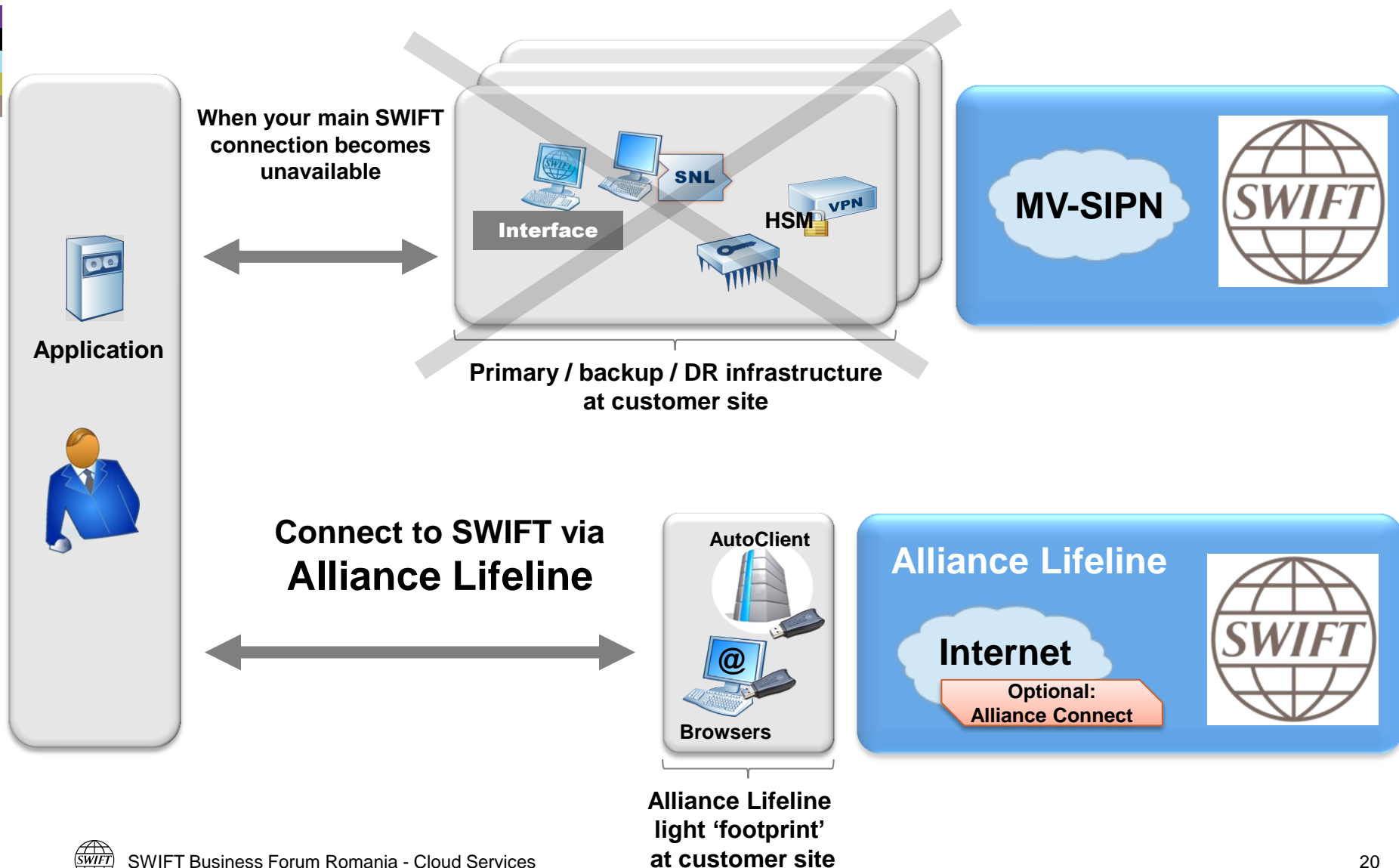
Manual and automated operations



Cost-effective cold standby solution



What is Alliance Lifeline?



Alliance Lifeline – Light footprint

1



Standard broadband **Internet connection**
**Option to connect using VPN*

2



Standard **Internet Explorer browser**

3



Standard **Windows PC / laptop**

4



SWIFT security tokens (USB)